

**Trucheck**<sup>TM</sup>

Helps find cancer early and  
saves lives.

# Breast Cancer Screening

*A simple blood test.*



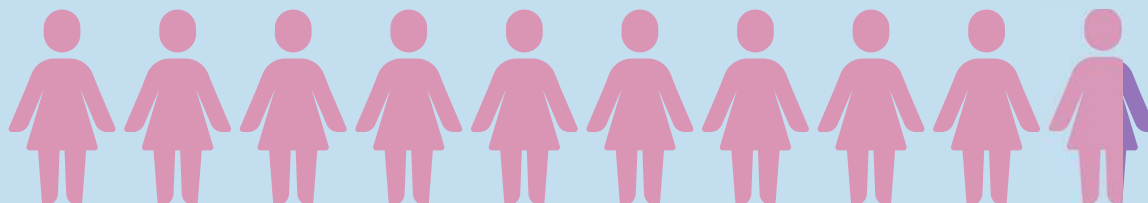
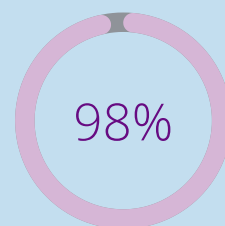
DATAR  
CANCER GENETICS

# HOW CAN FINDING BREAST CANCER EARLY HELP?

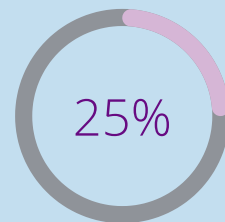
**1 in 7 women will develop breast cancer in their lifetime.<sup>1</sup>**

**Finding breast cancer early, when it is still localised, and has not spread, can significantly improve your chances of survival.**

If detected early, most women, around 98%, will survive their cancer for five years or more after diagnosis.<sup>2</sup>



If detected late, around 25 out of 100 women, will survive their cancer for 5 years or more after they are diagnosed.<sup>3</sup>



# WHY TRUCHECK?

---

Trucheck Breast - Helping protect ourselves and loved ones against cancer.

People may not show symptoms of cancer until it has spread and this can be stressful for the individual and their family.

Late detection can lead to intensive and expensive treatments.

Trucheck is a simple revolutionary blood test which can help you find cancer early, before you show symptoms.

As Trucheck is a simple blood test, you can assess your cancer health risks regularly.



**Trucheck is designed to be used in addition to, and not replace, conventional screening.**

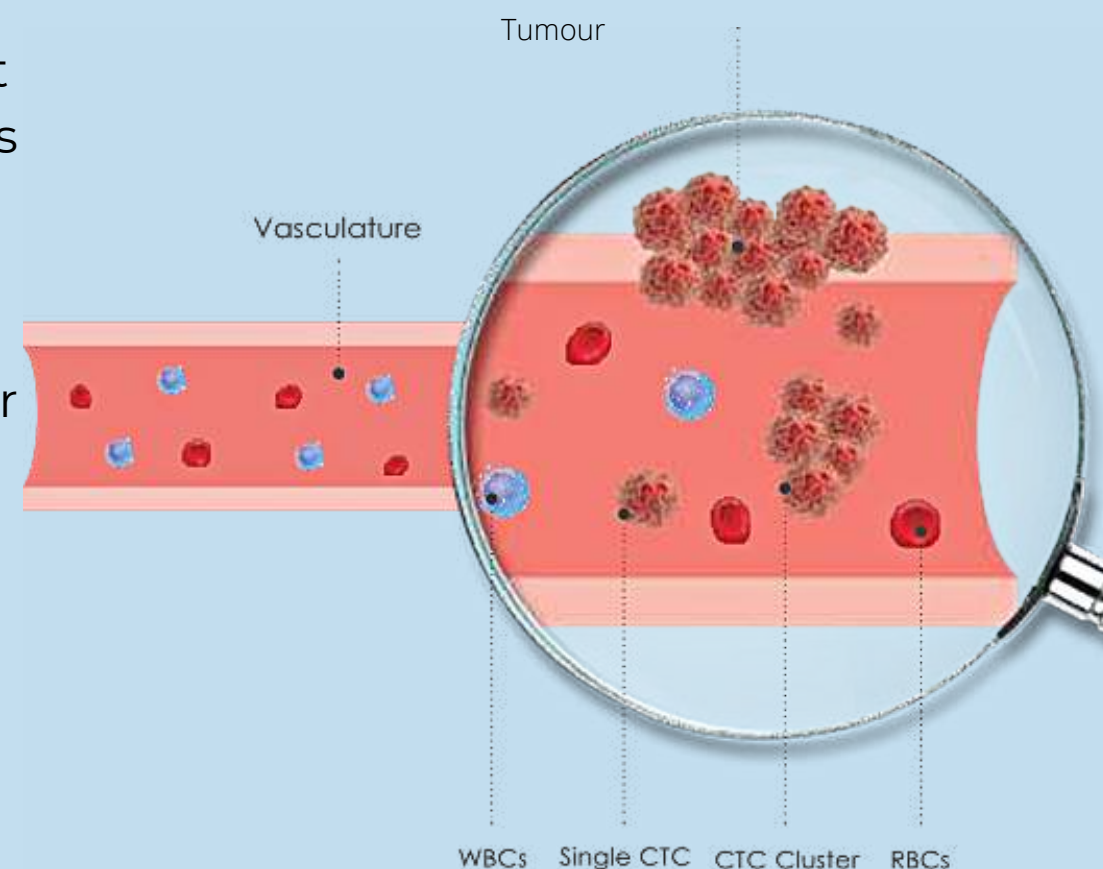
# HOW DOES TRUCHECK FIND CANCER EARLY?

When cancer is present in someone, it sheds tiny cells and tumour fragments into the bloodstream, called circulating tumour cells (CTCs).

These cells are the main reason cancer eventually spreads in the body, especially if they move in clusters (a group).

Trucheck can detect them from your blood sample and indicate the likely organ of origin.

Healthcare professionals can then carry out targeted follow up investigations and treat patients if necessary.



**KEY:**

WBC – White Blood Cell

CTC – Circulating Tumour Cell

RBC – Red Blood Cell

# ADVANTAGES OF TRUCHECK



Peace of mind



Quick and easy blood test



Direct assessment of cancer activity

# HOW DO I GET A TRUCHECK TEST?

1. You should discuss with your Doctor if Trucheck Breast is suitable for you. It could be particularly useful, if you have a higher risk because of your age or family history.
2. If it is, you can arrange with them where and when to take your blood test.
3. Once the blood has been taken, it will be sent to the laboratory in Surrey for testing.
4. The results will be sent to your Doctor within two weeks.



THE TRUCHECK  
TEST IS  
SPECIFICALLY  
DESIGNED FOR  
YOU.



# FREQUENTLY ASKED QUESTIONS



## **Do I have to go through a Doctor?**

Yes. A Doctor must approve and prescribe a Trucheck Breast test for you.

## **How long before my Doctor gets my results?**

Your Doctor will get your results within two weeks.

## **What does it mean if I receive a positive result?**

A positive result means the test has detected an indication of cancer. Your Doctor should discuss with you suitable next steps to confirm if cancer is present.

## **What does it mean if I receive a negative result?**

A negative result means the test detected no indication of cancer when you took the test.

## **Can I use Trucheck if I have symptoms of cancer?**

No. The test is designed for people without symptoms. If you have symptoms, you should seek urgent medical advice.



# FREQUENTLY ASKED QUESTIONS - CONTINUED



**Can I use Trucheck to monitor recurrence if I have had cancer?**

No. It is only suitable for people who have not had cancer.

**How often do I need to take the tests?**

You should discuss with your Doctor. It can be part of your yearly check-up.

**Does Trucheck replace conventional cancer screening?**

No. Trucheck is designed to be used in addition to, and not replace, conventional screening.

**If I have breast cancer, how often will Trucheck detect it?**

Trucheck will detect breast cancer 88% of the time.<sup>4</sup>

**Can Trucheck give a positive result when cancer is not present?**

There is a possibility that in around 1% of cases the test may show positive, but cancer is not actually present.<sup>5</sup>

## Important Safety Information

Trucheck has been designed for use in healthy adults over the age of 40. Trucheck does not detect all cancer types and should be used alongside other screening modalities as prescribed by a healthcare practitioner. Trucheck detects circulating tumour cells in the blood and is intended to provide an indication of cancer activity and location in the body.

Trucheck results should be interpreted by a healthcare practitioner. A “Negative” result does not rule out cancer. A "Positive" result requires follow up diagnostic investigations to confirm diagnosis. If cancer is not confirmed after further investigations, it may not be present, may not be detectable by diagnostic follow-up testing, or may originate from a different part of the body. False-positive and false-negative test results do occur. Rx only.

## References

- <sup>1</sup> Cancer Research UK, *Breast Cancer Statistics* [Internet]; [cited 2022, Sep 25] Available from <https://www.cancerresearchuk.org/health-professional/cancer-statistics/statistics-by-cancer-type/breast-cancer#heading-Four>
- <sup>2,3</sup> Cancer Research UK, *Survival* [Internet]; [cited 2022, Sep 25] Available from <https://www.cancerresearchuk.org/about-cancer/breast-cancer/survival>
- <sup>4,5</sup> Crook T, Leonard R, Mokbel K, Thompson A, Michell M, Page R et al. *Accurate Screening for Early-Stage Breast Cancer by Detection and Profiling of Circulating Tumor Cells* [Internet]. MDPI. 2022 [cited 28 September 2022]. Available from: <https://www.mdpi.com/2072-6694/14/14/3341/htm>

**Trucheck**<sup>TM</sup>  
**-Research**



CANCER PREVENTION RESEARCH | RESEARCH BRIEF

Hallmark Circulating Tumor – Associated Cell Clusters|  
Signify 230 Times Higher One-Year Cancer Risk

Cancer Cytopathology

Evaluation of Circulating Tumor Cell Clusters for  
Pan-Cancer Noninvasive Diagnostic Triaging

ACS JOURNALS



Circulating Ensembles of Tumor – Associated Cells: A  
Redoubtable New Systemic Hallmark of Cancer

IJC  
International Journal of Cancer

# DATAR CANCER GENETICS

UNITED KINGDOM | GERMANY | INDIA



**Advena Ltd.,**  
Tower Business Centre, 2nd Flr,  
Tower Street, Swatar, BKR 4013, Malta

Contact us:

✉ **UK:** [enquiries@datarpgx.com](mailto:enquiries@datarpgx.com)

🌐 [datarpgx.com](http://datarpgx.com)

Proprietary Technology, All Intellectual Property Rights Protected under relevant laws.